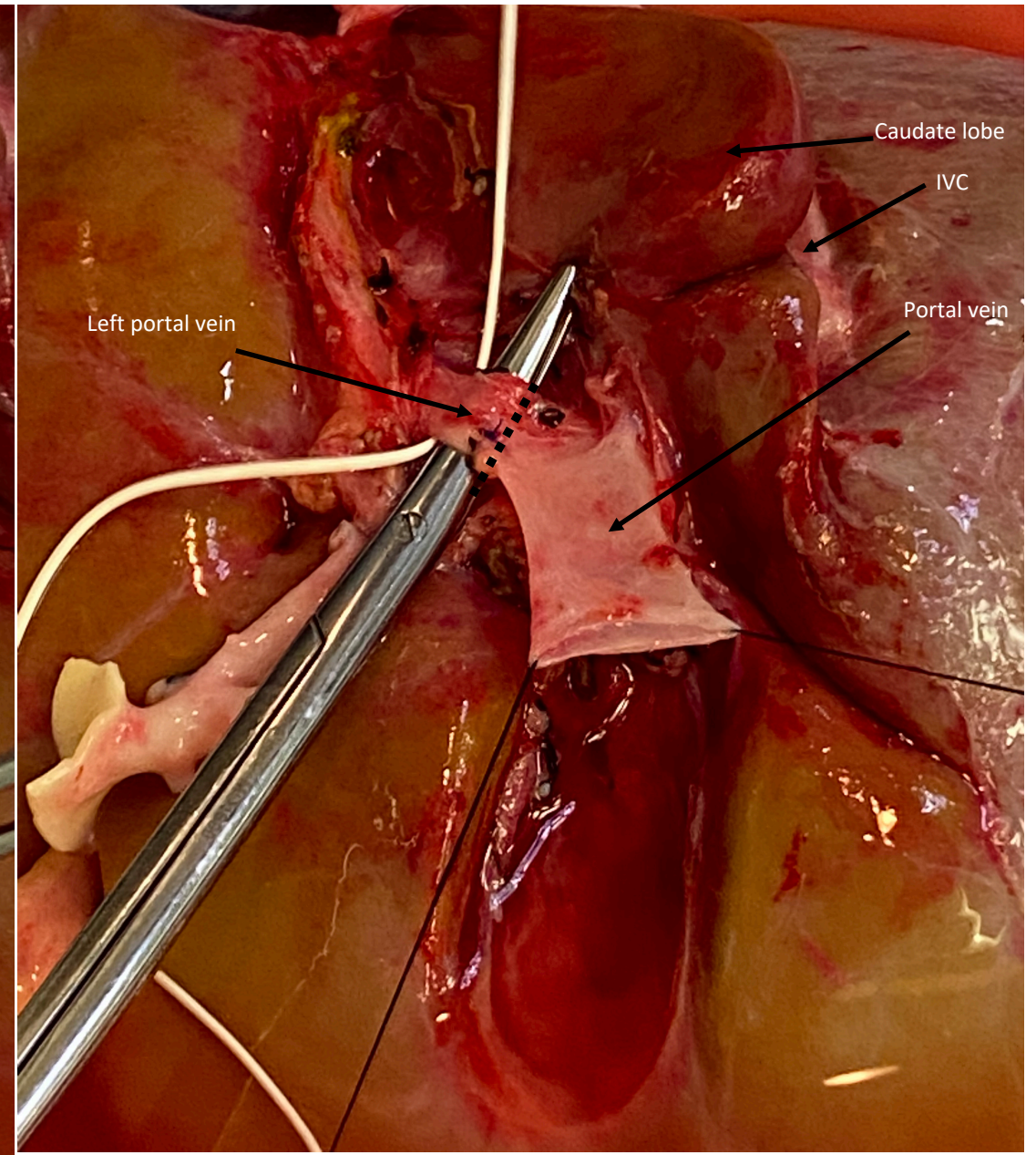
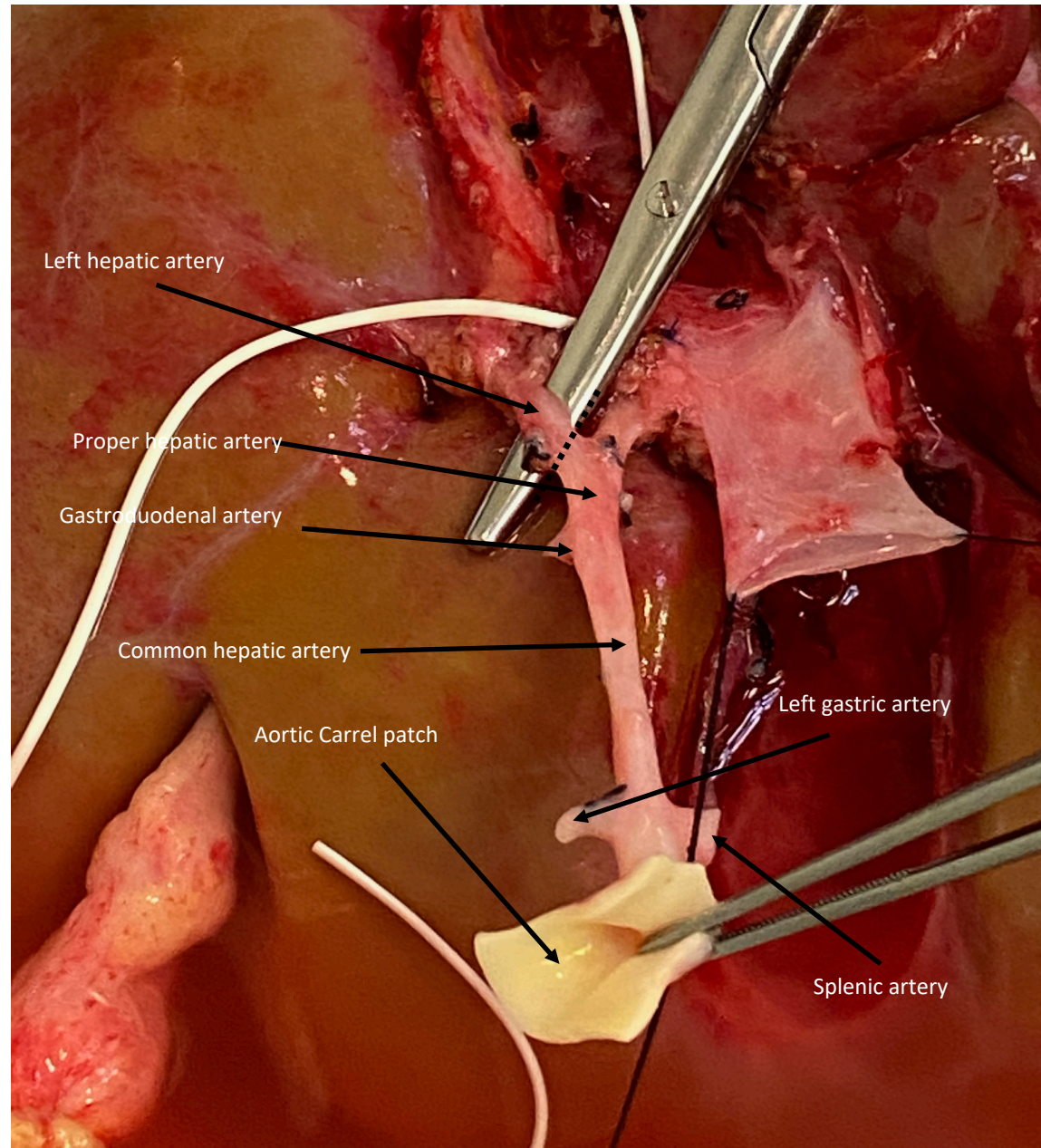


### Division of main structures:

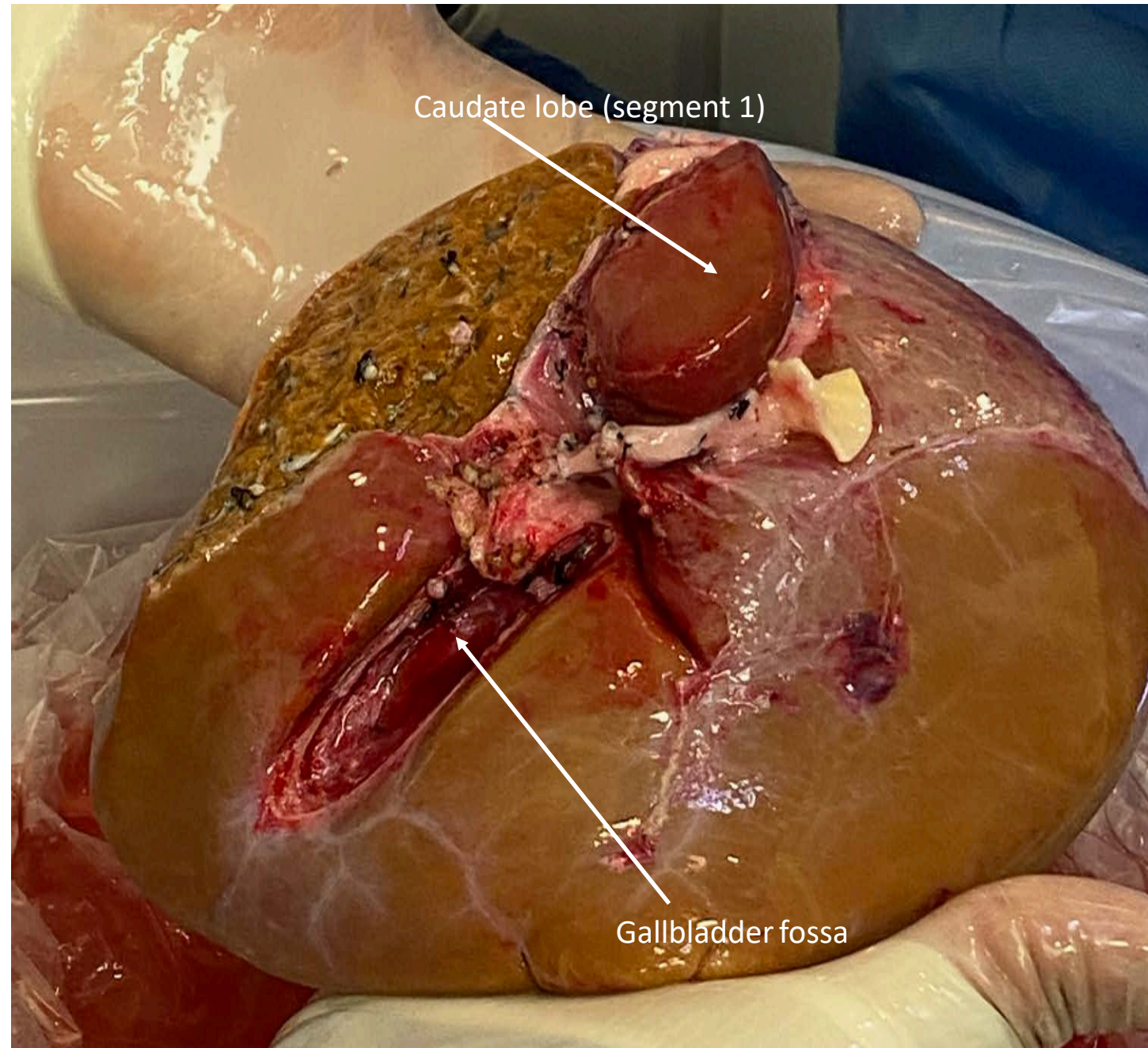
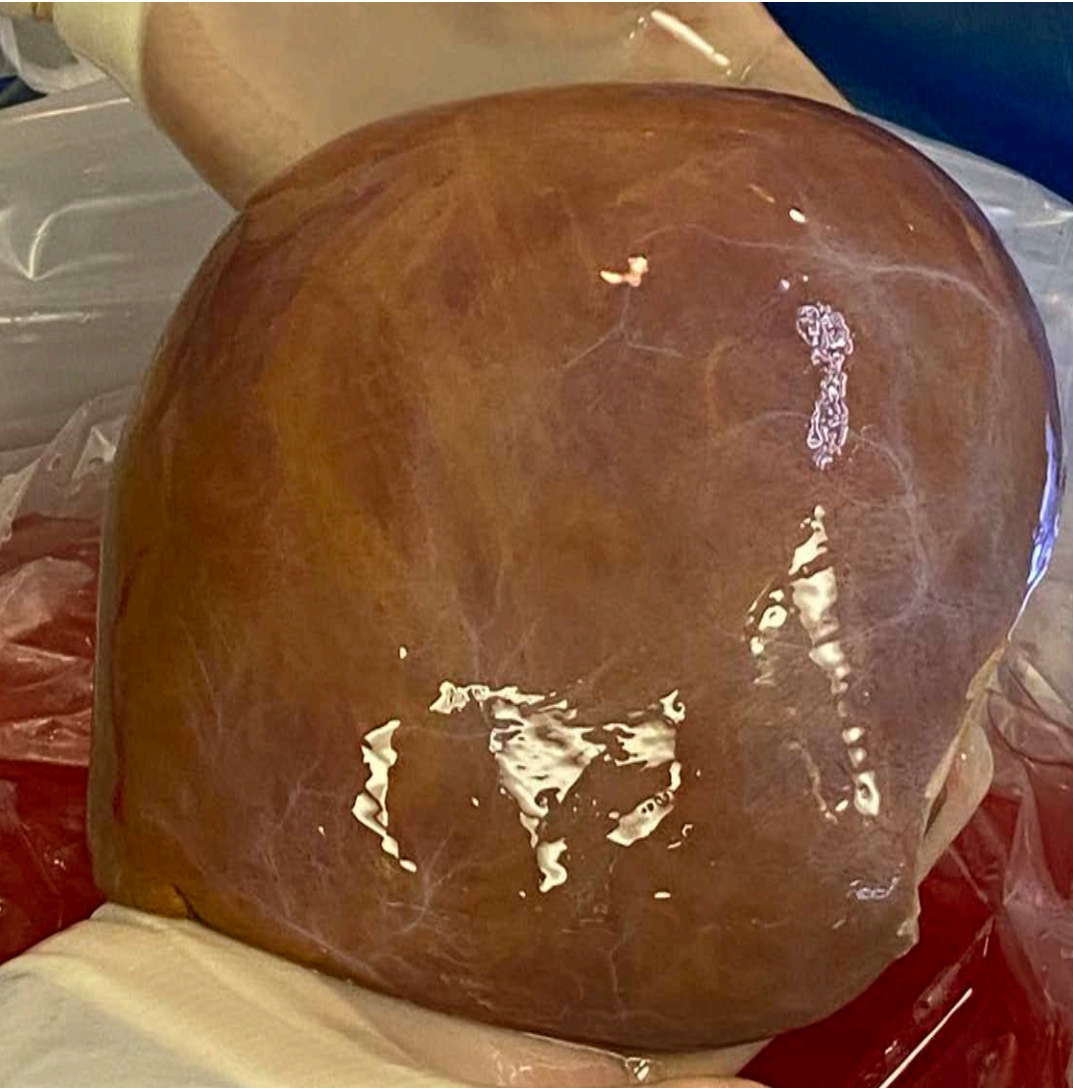
Left lobe with left hepatic artery, left portal vein and left hepatic duct connected to Roux-en-Y loop (recipient of the left lobe of the liver with biliary atresia after Kasai)

Right lobe with right hepatic artery as the continuation of proper/common hepatic artery with Carrel aortic patch, right portal vein as the elongation of portal vein.

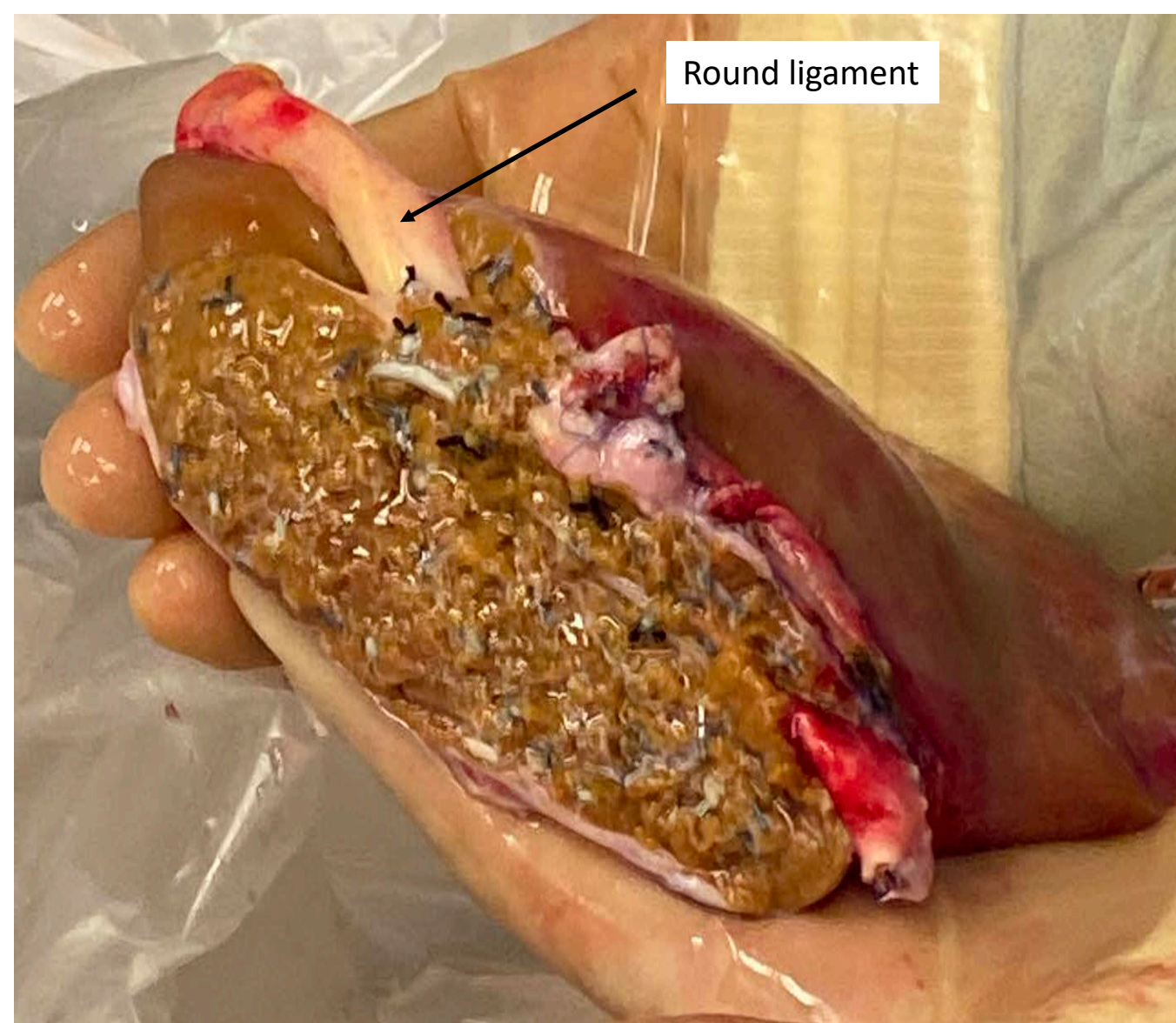




## Right lobe after split







**Left lobe** of the liver (segments II, III, IV) – split along Cantlie line



